

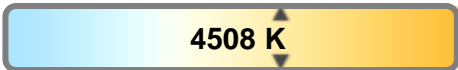
Light efficiency:



Light quality:



Color temperature:



Output: 1323 lm  
Peak: 27839 cd  
Power: 37.4 W  
PF: 0.96



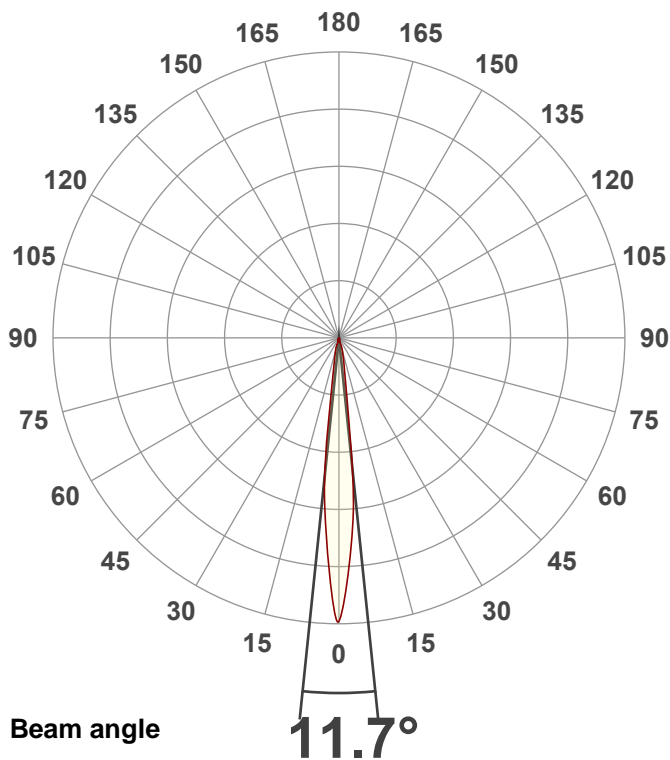
Tracking number: [n/a](#)

Product name:  
**ElectraPix Par 7**

Item number:  
**4500K**

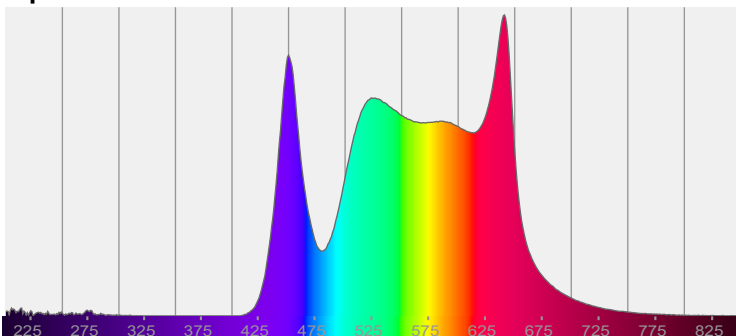
Date and time:  
**9/9/2024 10:45:15 AM**

Description:  
**@ 43**

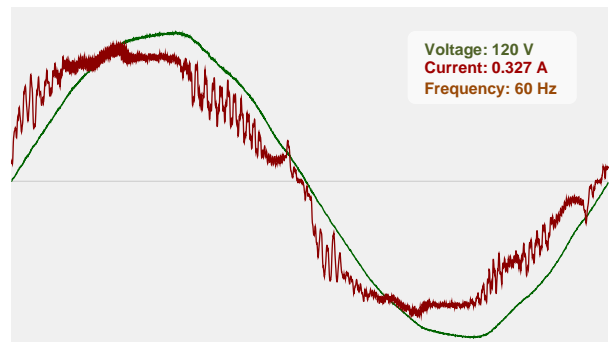


CIE 1931  
x: 0.364  
y: 0.381

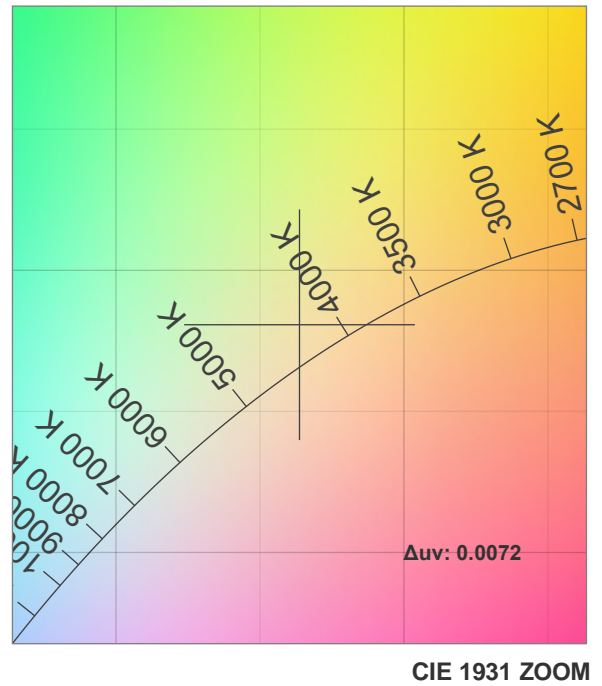
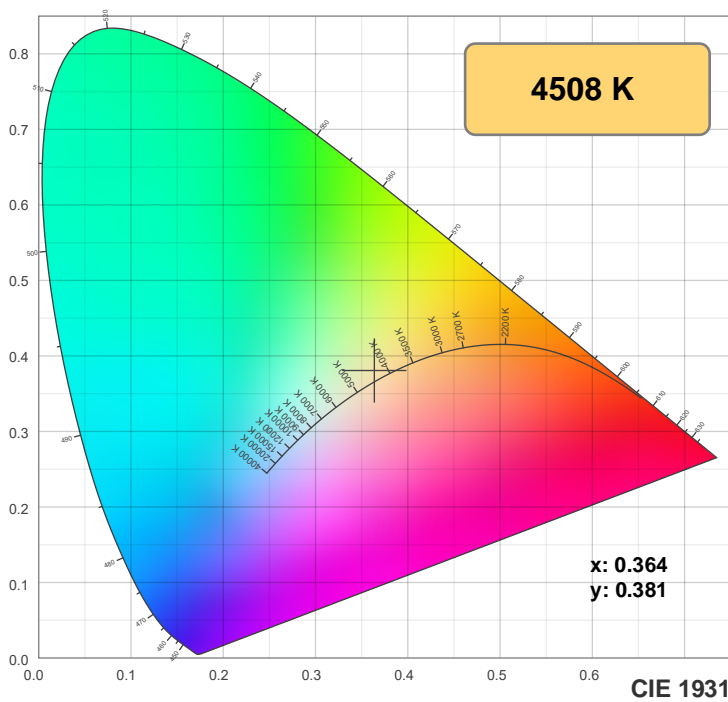
Spectra



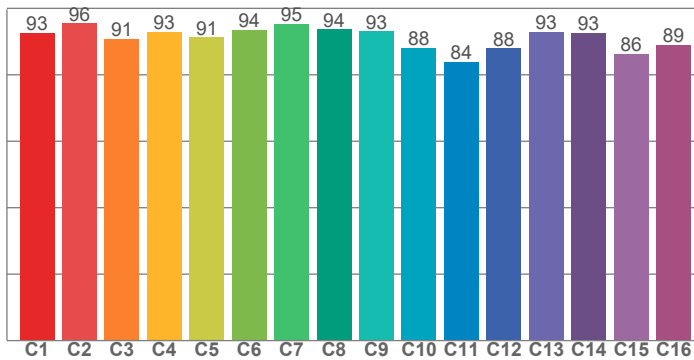
Power



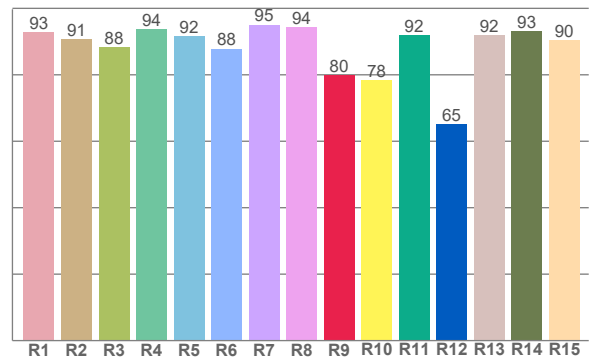
## Color details



**TM-30: 91.3**



**CRI: 91.8 (R1-R8)**



**CRI R values, only R1-R8 are used to calculate final CRI value**

R1	R2	R3	R4	R5	R6	R7	R8	R9	R10	R11	R12	R13	R14	R15
92.9	90.8	88.2	93.7	91.5	87.9	95.1	94.3	79.9	78.4	92.0	65.2	91.8	93.1	90.4

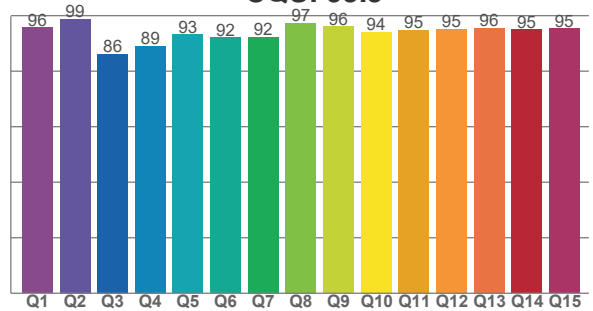
**TM30 C values, 16 binned values out of total of 99 C values**

C1	C2	C3	C4	C5	C6	C7	C8	C9	C10	C11	C12	C13	C14	C15	C16
92.7	95.6	90.9	93.0	91.2	93.6	95.4	93.8	93.2	88.1	83.9	87.9	92.9	92.6	86.3	89.0

**CQS Q values**

Q1	Q2	Q3	Q4	Q5	Q6	Q7	Q8	Q9	Q10	Q11	Q12	Q13	Q14	Q15
95.8	98.8	86.3	89.1	93.1	92.1	92.3	97.4	96.1	94.2	94.8	95.2	95.6	95.0	95.4

**CQS: 93.3**



### Color parameters

Color temperature	Color rendering index	Red component	Color fidelity	Color gamut	Color quality scale	Color coordinate cie 1931	Color coordinate cie 1931	Color coordinate	Color coordinate	Color deviation from black body
CCT	CRI	CRI R9	TM30 Rf	TM30 Rg	CQS	x	y	u	v	Δuv
4508 K	91.8	79.9	91.3	101.3	93.3	0.364	0.381	0.213	0.334	0.0072

# TM-30 details

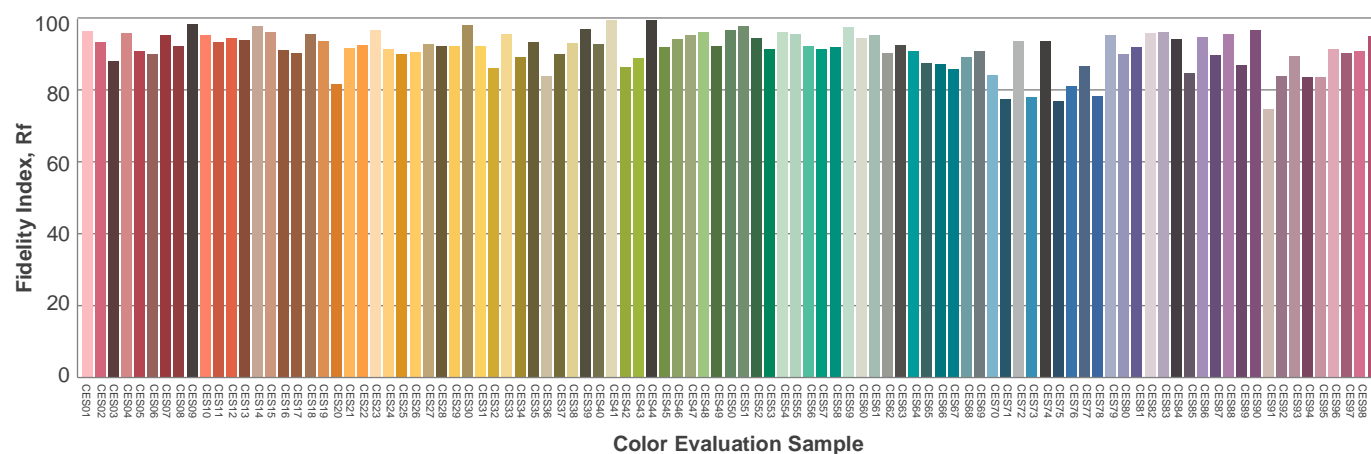
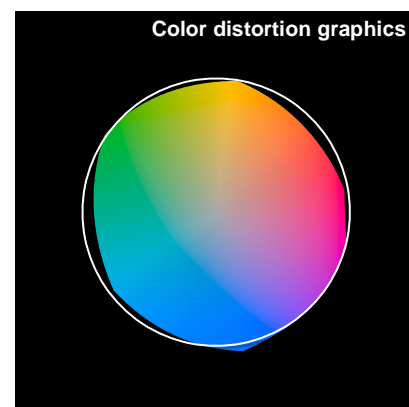
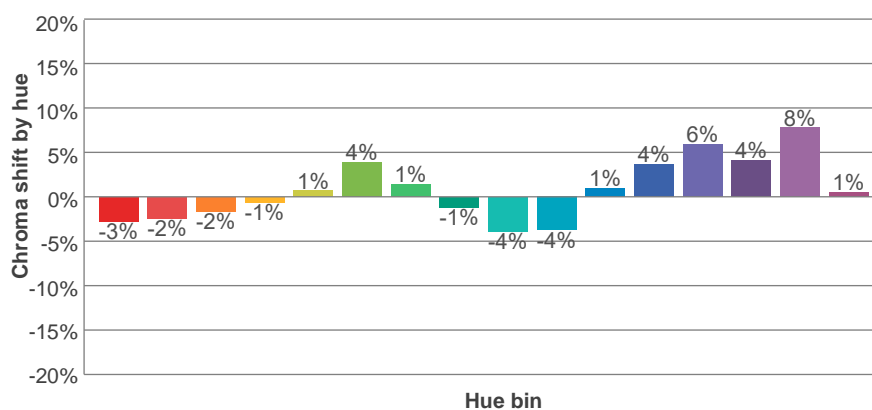
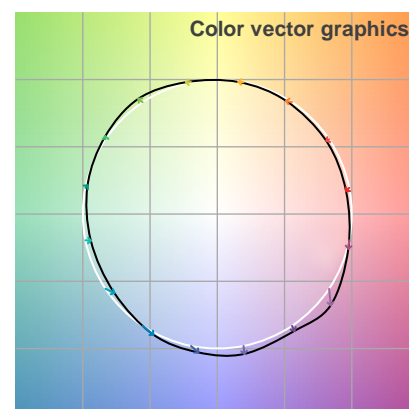
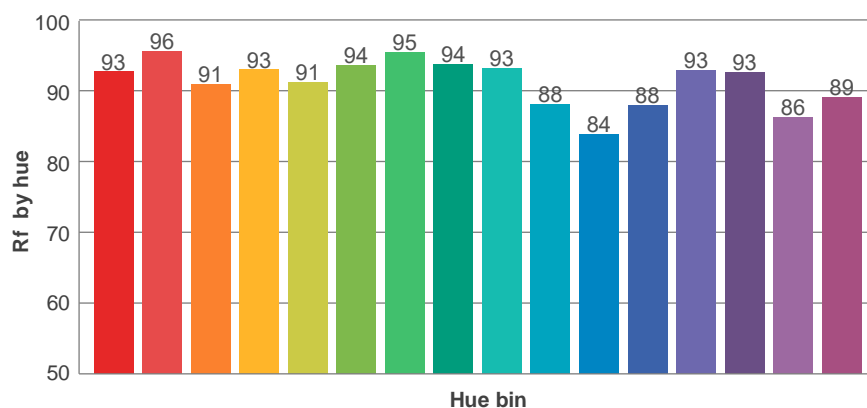
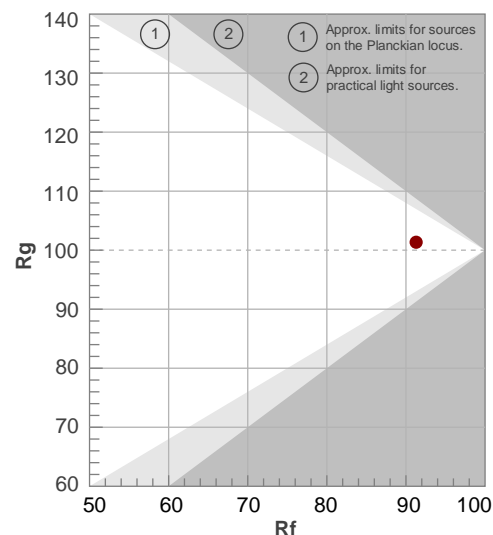
**Rf 91.3**

Fidelity index Rf

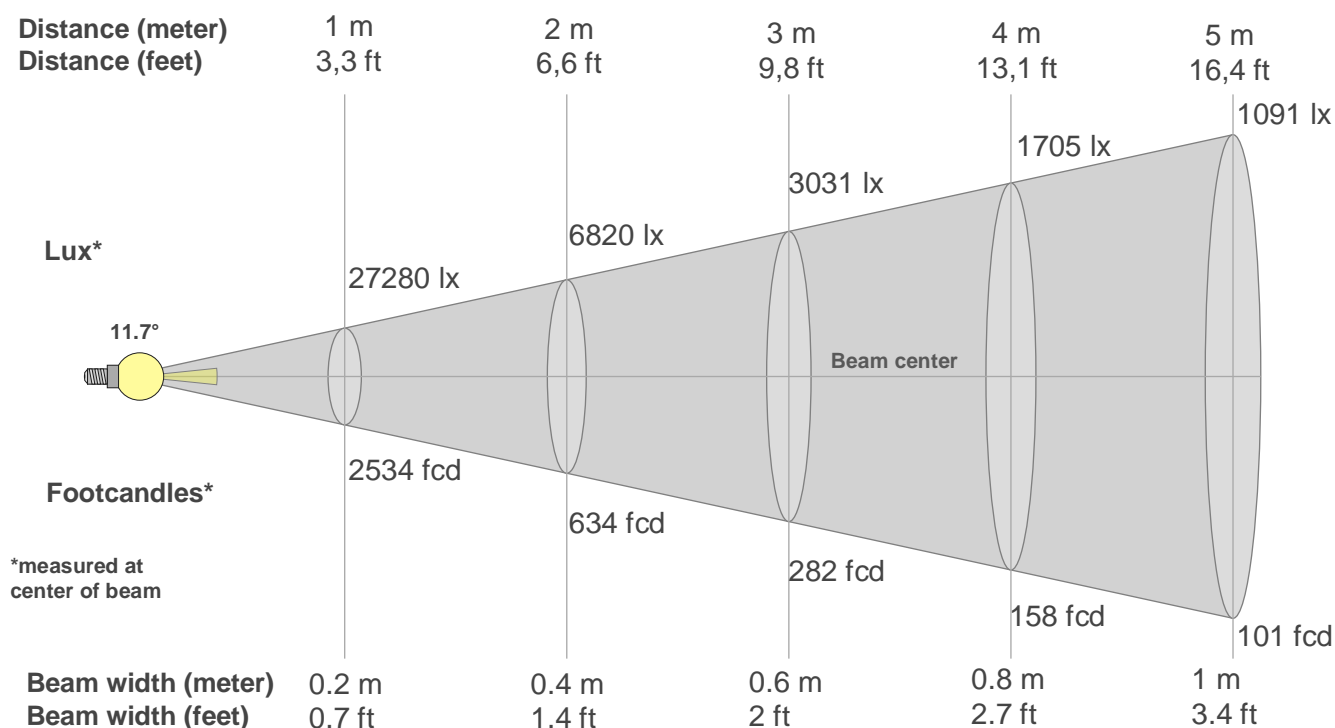
**Rg 101.3**

Gamut index Rg

Hue Bin	R <sub>f</sub>	Shifts (%)	
		Chroma	Hue
1	93	-3%	-2%
2	96	-2%	0%
3	91	-2%	4%
4	93	-1%	4%
5	91	1%	4%
6	94	4%	1%
7	95	1%	-2%
8	94	-1%	-2%
9	93	-4%	1%
10	88	-4%	6%
11	84	1%	10%
12	88	4%	6%
13	93	6%	0%
14	93	4%	-1%
15	86	8%	-10%
16	89	1%	-6%



## Beam details



### Beam intensities from 1-20m

1m	2m	3m	4m	5m	6m	7m	8m	9m	10m	11m	12m	13m	14m	15m	16m	17m	18m	19m	20m
3.3ft	6.6ft	9.8ft	13.1ft	16.4ft	19.7ft	23ft	26.2ft	29.5ft	32.8ft	36.1ft	39.4ft	42.7ft	45.9ft	49.2ft	52.5ft	55.8ft	59.1ft	62.3ft	65.6ft
27280lx	6820lx	3031lx	1705lx	1091lx	758lx	557lx	426lx	337lx	273lx	225lx	189lx	161lx	139lx	121lx	107lx	94lx	84lx	76lx	68lx
2534.4fcd	633.6fcd	281.6fcd	158.4fcd	101.4fcd	70.4fcd	51.7fcd	39.6fcd	31.3fcd	25.3fcd	20.9fcd	17.6fcd	15fcd	12.9fcd	11.3fcd	9.9fcd	8.8fcd	7.8fcd	7fcd	6.3fcd

### Intensities in 0° c-plane

0°	1°	2°	3°	4°	5°	6°	7°	8°	9°	10°	11°	12°	13°	14°	15°	16°	17°	18°	19°
27.3K	25.1K	23.0K	20.8K	18.7K	16.3K	13.6K	10.8K	8.0K	5.3K	3.1K	2.5K	1.9K	1.4K	0.8K	0.4K	0.3K	0.3K	0.2K	0.2K
100%	92%	84%	76%	68%	60%	50%	40%	29%	19%	11%	9%	7%	5%	3%	1%	1%	1%	1%	1%

### Intensities in 90° c-plane

0°	1°	2°	3°	4°	5°	6°	7°	8°	9°	10°	11°	12°	13°	14°	15°	16°	17°	18°	19°
27.3K	25.1K	23.0K	20.8K	18.7K	16.3K	13.6K	10.8K	8.0K	5.3K	3.1K	2.5K	1.9K	1.4K	0.8K	0.4K	0.3K	0.3K	0.2K	0.2K
100%	92%	84%	76%	68%	60%	50%	40%	29%	19%	11%	9%	7%	5%	3%	1%	1%	1%	1%	1%

### Intensities in 180° c-plane

0°	1°	2°	3°	4°	5°	6°	7°	8°	9°	10°	11°	12°	13°	14°	15°	16°	17°	18°	19°
27.3K	26.0K	23.5K	21.1K	18.6K	16.1K	13.6K	11.0K	8.5K	6.0K	3.4K	2.4K	1.9K	1.5K	1.0K	0.5K	0.4K	0.3K	0.3K	0.2K
100%	95%	86%	77%	68%	59%	50%	41%	31%	22%	12%	9%	7%	5%	4%	2%	1%	1%	1%	1%

### Intensities in 270° c-plane

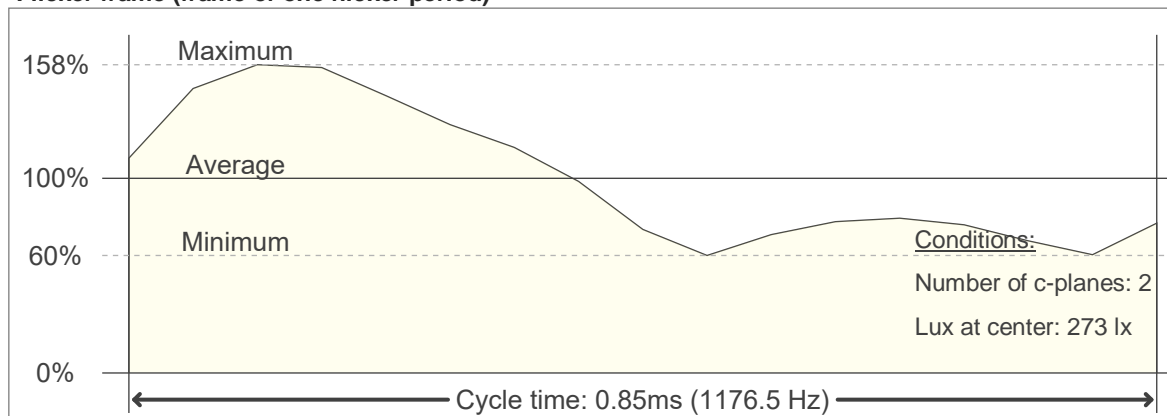
0°	1°	2°	3°	4°	5°	6°	7°	8°	9°	10°	11°	12°	13°	14°	15°	16°	17°	18°	19°
27.3K	26.0K	23.5K	21.1K	18.6K	16.1K	13.6K	11.0K	8.5K	6.0K	3.4K	2.4K	1.9K	1.5K	1.0K	0.5K	0.4K	0.3K	0.3K	0.2K
100%	95%	86%	77%	68%	59%	50%	41%	31%	22%	12%	9%	7%	5%	4%	2%	1%	1%	1%	1%

Beam angle 50%	Field angle 10%	Cutoff angle 2,5%	Intensity ratio in 120° cone	Intensity ratio in 90° cone
11.7°	20.8°	28.8°	100.0%	99.5%

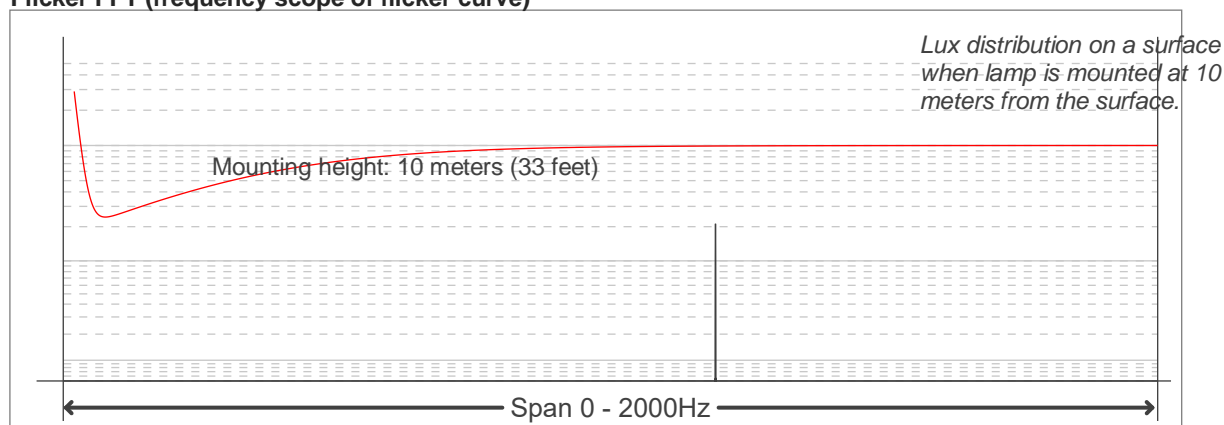
## Flicker

**Flicker curve (complete sampled flicker signal)**

**Flicker frame (frame of one flicker period)**



**Flicker FFT (frequency scope of flicker curve)**



**Flicker results:**

Flicker frequency:		1176.47 Hz	
Flicker index:	0.15	JA8/10 40Hz	0.1 %
Flicker percentage:	55.95 %	JA8/10 90Hz	0.18 %
SVM: (Visual flicker)	0.43	JA8/10 200Hz	0.26 %
PstLM	0.06	JA8/10 400Hz	0.53 %
Mp	0.03	JA8/10 1000Hz	4.91 %

**Flicker conditions:**

Sample rate:	20000 samples/second
--------------	----------------------